

Monday, December 2, 2024

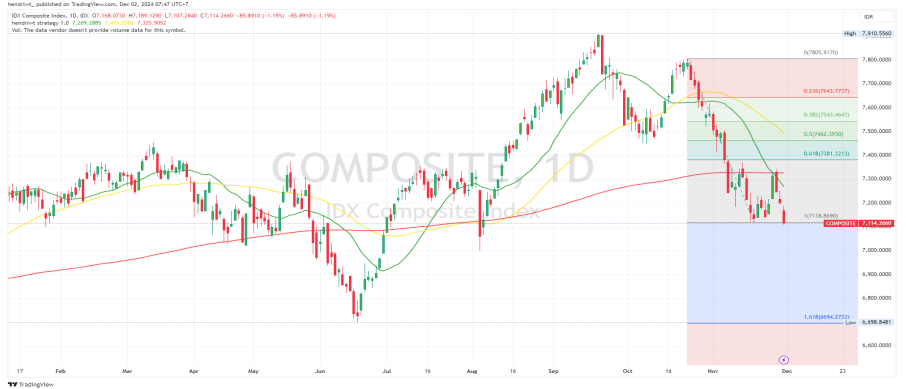
<b>IHSG</b>	<b>7,114</b>
Change (%)	<b>-1.19%</b>
Net Foreign	<b>21.56 T</b>
Support	<b>7080</b>
Resistance	<b>7150</b>

Sectoral	Last	Change %
IDX:IDXASIC	1,303.3	<b>-0.92%</b>
IDX:IDXCYCLIC	845.5	<b>0.42%</b>
IDX:IDXENERGY	2,569.8	<b>-1.67%</b>
IDX:IDXFİNANCE	1,456.0	<b>-0.44%</b>
IDX:IDXHEALTH	1,475.9	<b>0.03%</b>
IDX:IDXNONCYC	724.4	<b>0.18%</b>
IDX:IDXINDUST	1,069.2	<b>-0.50%</b>
IDX:IDXINFRA	1,421.2	<b>-0.34%</b>
IDX:IDXPROPERTY	765.9	<b>-0.12%</b>
IDX:IDXTÉCHNO	4,105.2	<b>-1.29%</b>
IDX:IDXTRANS	1,398.4	<b>-0.30%</b>

Commodities	Last	Change %
Crude Oil Nov 24	68.3	<b>0.10%</b>
Brent Crude Oil	71.6	<b>0.13%</b>
Gold Dec 24	2684.5	<b>0.61%</b>
Copper Dec 24	4.7	<b>1.64%</b>

Indeks	Close	Change %
Dow Jones Industrial Average	44,911	<b>0.42%</b>
S&P 500	6,032	<b>0.56%</b>
NASDAQ Composite	19,218	<b>0.83%</b>
FTSE 100	8,287	<b>0.07%</b>
DAX PERFORMANCE-INDEX	19,626	<b>1.03%</b>
IHSG	7,114	<b>-1.19%</b>
HANG SENG INDEX	19,424	<b>0.00%</b>
Nikkei 225	38,001	<b>-0.54%</b>

Indikator	Tingkat
GDP Growth Rate	<b>1.5</b> percent
GDP Annual Growth Rate	<b>4.95</b> percent
Unemployment Rate	<b>4.91</b> percent
Inflation Rate	<b>1.71</b> percent
Inflation Rate MoM	<b>0.08</b> percent
Interest Rate	<b>6</b> percent
Balance of Trade	<b>2475</b> USD Million
Current Account	<b>-2150</b> USD Million
Current Account to GDP	<b>-0.3</b> percent of GDP
Government Debt to GDP	<b>39.3</b> percent of GDP
Government Budget	<b>-1.65</b> percent of GDP
Business Confidence	<b>14.4</b> points
Manufacturing PMI	<b>49.2</b> points



Source: Trading View, Divisi Research Erdikha

### NEWS HIGHLIGHT

- Surplus 32 Persen, ALII Kuartal III 2024 Catat Laba Rp207 Miliar
- Pendapatan Drop, Kuartal III 2024 Laba POLL Melesat 208 Persen
- Susut 29 Persen, Laba HITS Kuartal III 2024 Tersisa USD7,89 Juta
- Divestasi, Anindhita Bakrie Lego 1,75 Juta Saham ALII Rp375 per Helai
- Pendapatan Naik 231 Persen, BRMS Kuartal III 2024 Defisit USD769 Juta

### NEWS MARKET

Hari ini, pasar akan mencermati data inflasi dan PMI manufaktur Indonesia yang menjadi indikator penting ekonomi. Inflasi yang naik dan manufaktur yang tetap lesu mengindikasikan tantangan besar bagi daya beli masyarakat dan pertumbuhan ekonomi nasional. Perbaikan di sektor manufaktur China menjadi harapan untuk mendorong ekspor dan menjaga stabilitas ekonomi.

- \*1. Inflasi Indonesia Naik di November 2024\*
  - Proyeksi Inflasi: Inflasi bulanan diperkirakan mencapai 0,25% (mtm), sementara tahunan diprediksi berada di 1,49% (yoy), naik dari inflasi Oktober yang tercatat 1,71% (yoy).
  - Pemicu Kenaikan:
    - Kenaikan harga BBM non-subsidi.
    - Lonjakan harga bahan pokok seperti bawang, cabai merah, dan minyak goreng.
    - Peningkatan tarif angkutan udara dan harga emas.
  - Dampak: Inflasi beruntun dua bulan ini menunjukkan tren kenaikan harga setelah sebelumnya terjadi deflasi selama lima bulan berturut-turut.
- \*2. PMI Manufaktur Indonesia Tetap di Zona Kontraksi\*
  - Kondisi Terkini: PMI manufaktur Indonesia untuk November akan dirilis hari ini, menyusul laporan kontraksi empat bulan berturut-turut di level 49,2 pada Oktober 2024.
  - Bahaya Kontraksi:
    - Penurunan aktivitas manufaktur mengancam serapan tenaga kerja, berpotensi meningkatkan angka pengangguran.
    - Daya beli masyarakat menurun, menghambat pertumbuhan ekonomi yang bergantung pada konsumsi rumah tangga (>50% PDB).
- \*3. Data Manufaktur China Menjadi Sorotan\*
  - PMI Manufaktur Caixin: Diperkirakan naik ke 50,5 dari 50,3 pada Oktober 2024, melanjutkan tren ekspansi manufaktur setelah langkah stimulus Beijing.
  - Relevansi untuk Indonesia: Perbaikan sektor manufaktur China dapat memengaruhi permintaan ekspor Indonesia, terutama di sektor komoditas.

Sources : CNBC Indonesia, Trading economic, [kontan.co.id](http://kontan.co.id),

Stock Recommendation						
Stock	Last Price	Recommendation	TP 1	TP 2	Stop Loss	Commentary
TLKM	2,710	Speculative Buy	2,760	2,840	2,620	Consolidation, entry level: 2630-2710
PANI	15,550	Speculative Buy	15,850	16,325	15,075	Consolidation, entry level: 15100-15550
BRMS	414	Trading Buy	422	434	400	Morning Star, entry level: 402-414
TAPG	810	Speculative Buy	825	850	785	Oversold, entry level: 790-810
LSIP	1,090	Hold	1,110	1,140	1,055	Bullish Continuation

# LQ45 TECHNICAL VIEW



Monday, December 2, 2024

Daily Support & Resistance					
CODE	S2	S1	Price	R1	R2
ACES	730	740	770	790	805
ADRO	1,890	1,980	2,080	2,260	2,310
AKRA	1,190	1,200	1,230	1,250	1,265
AMRT	2,750	2,790	2,850	2,930	2,960
ANTM	1,350	1,370	1,430	1,470	1,500
ARTO	2,520	2,550	2,640	2,690	2,730
ASII	4,940	4,980	5,100	5,175	5,225
BBCA	9,775	9,850	10,000	10,150	10,225
BBNI	4,820	4,880	4,980	5,100	5,150
BBRI	4,180	4,210	4,250	4,310	4,330
BBTN	1,235	1,245	1,285	1,305	1,325
BMRI	5,800	5,950	6,150	6,450	6,550
BRIS	2,800	2,830	2,900	2,950	2,980
BRPT	755	785	855	915	950
BUKA	116	118	122	126	128
CPIN	4,520	4,590	4,670	4,810	4,850
EMTK	456	468	486	505	515
ESSA	745	760	820	850	880
EXCL	2,110	2,140	2,220	2,280	2,320
GGRM	12,575	12,700	12,825	13,050	13,100
GOTO	63	65	71	75	78
HRUM	995	1,030	1,090	1,160	1,190
ICBP	11,600	11,700	11,900	12,100	12,200
INCO	3,510	3,540	3,600	3,660	3,690
INDF	7,350	7,450	7,550	7,750	7,800
INKP	7,050	7,150	7,250	7,450	7,500
INTP	6,775	6,800	6,850	6,900	6,925
ITMG	25,725	26,175	26,650	27,525	27,750
KLBF	1,460	1,480	1,500	1,540	1,550
MAPI	1,425	1,455	1,575	1,635	1,695
MBMA	486	492	500	510	515
MDKA	1,695	1,760	1,840	1,970	2,010
MEDC	1,020	1,055	1,090	1,155	1,170
MTEL	600	605	620	625	630
PGAS	1,465	1,490	1,520	1,570	1,585
PGEO	955	970	990	1,020	1,030
PTBA	2,580	2,640	2,700	2,820	2,850
PTMP	59	61	65	69	71
SIDO	555	565	575	595	600
SMGR	3,290	3,390	3,500	3,690	3,740
SRTG	2,030	2,060	2,120	2,180	2,210
TLKM	2,620	2,660	2,710	2,780	2,800
TOWR	690	695	705	715	720
UNTR	25,800	26,275	26,775	27,725	27,975
UNVR	1,795	1,825	1,865	1,925	1,945

Price Performance									
CODE	Daily (%)	P/E	YTD (%)	%	52W Low	CURRENT POSITION	52W High	%	
ACES	-0.65%	15	6.9%	16%	665	▼	995	-23%	
ADRO	-24.64%	3	-12.6%	0%	2,070	▼	4,300	-52%	
AKRA	0.41%	10	-16.6%	2%	1,210	▼	1,865	-34%	
AMRT	-0.70%	33	-2.7%	14%	2,490	▼	3,650	-22%	
ANTM	0.70%	14	-16.1%	22%	1,175	▼	1,845	-22%	
ARTO	-1.12%	342	-9.0%	39%	1,895	▼	3,860	-32%	
ASII	-0.49%	6	-9.7%	19%	4,290	▼	5,825	-12%	
BBCA	0.00%	23	6.4%	15%	8,675	▼	10,950	-9%	
BBNI	-0.90%	9	-7.3%	17%	4,260	▼	6,250	-20%	
BBRI	-1.85%	10	-25.8%	4%	4,090	▼	6,450	-34%	
BBTN	-0.39%	5	2.8%	9%	1,175	▼	1,610	-20%	
BMRI	-4.65%	10	1.7%	11%	5,525	▼	7,550	-19%	
BRIS	-0.34%	20	66.7%	80%	1,615	▼	3,350	-13%	
BRPT	-3.93%	317	-35.7%	9%	785	▼	1,947	-56%	
BUKA	-0.81%	#N/A	-43.5%	14%	107	▼	218	-44%	
CPIN	-1.68%	38	-7.1%	6%	4,410	▼	5,650	-17%	
EMTK	-0.82%	64	-17.6%	39%	350	▼	670	-27%	
ESSA	1.23%	15	54.7%	67%	490	▼	1,010	-19%	
EXCL	1.83%	18	11.0%	18%	1,885	▼	2,650	-16%	
GGRM	-1.16%	13	-36.9%	0%	12,825	▼	21,525	-40%	
GOTO	-1.39%	#N/A	-17.4%	42%	50	▼	116	-39%	
HRUM	-1.80%	8	-18.4%	4%	1,050	▼	1,590	-31%	
ICBP	0.00%	17	12.5%	24%	9,600	▼	12,875	-8%	
INCO	-0.55%	23	-16.5%	1%	3,554	▼	5,218	-31%	
INDF	-1.31%	7	17.1%	29%	5,850	▼	8,000	-6%	
INKP	-2.03%	8	-12.9%	2%	7,100	▼	10,000	-28%	
INTP	-0.72%	13	-27.1%	9%	6,275	▼	10,200	-33%	
ITMG	-2.38%	5	3.9%	13%	23,575	▼	28,775	-7%	
KLBF	0.33%	22	-6.8%	9%	1,375	▼	1,795	-16%	
MAPI	5.00%	15	-12.0%	27%	1,240	▼	2,050	-23%	
MBMA	-1.96%	70	-10.7%	5%	476	▼	730	-32%	
MDKA	-4.66%	173	-31.9%	1%	1,830	▼	2,970	-38%	
MEDC	-3.11%	5	-5.6%	11%	980	▼	1,635	-33%	
MTEL	2.48%	24	-12.1%	13%	550	▼	765	-19%	
PGAS	-1.30%	7	34.5%	43%	1,060	▼	1,700	-11%	
PGEO	-1.49%	16	-15.4%	0%	990	▼	1,500	-34%	
PTBA	-3.23%	6	10.7%	17%	2,300	▼	3,180	-15%	
PTMP	-1.52%	12	-67.8%	25%	52	▼	338	-81%	
SIDO	-0.86%	15	9.5%	17%	492	▼	780	-26%	
SMGR	-3.05%	20	-45.3%	3%	3,410	▼	6,650	-47%	
SRTG	0.95%	5	29.3%	73%	1,225	▼	2,800	-24%	
TLKM	-0.37%	12	-31.4%	8%	2,500	▼	4,240	-36%	
TOWR	0.00%	11	-28.8%	7%	660	▼	1,030	-32%	
UNTR	-2.19%	5	18.3%	28%	20,925	▼	28,150	-5%	
UNVR	-1.06%	20	-47.2%	7%	1,735	▼	3,700	-50%	

Sumber: Research Team Erdikha Elit Sekuritas

# LQ45 PRICE PERFORMANCE



Monday, December 2, 2024

CODE	PRICE	Daily (%)	PER		52 WEEK PRICE PERFORMANCE	YTD (%)		PRICE	%	52W Low	CURRENT POSITION	52W High	%
BRIS	2,900	-0.34%	20			66.67%		2,900	80%	1,615	▼	3,350	-13%
ESSA	820	1.23%	15			54.72%		820	67%	490	▼	1,010	-19%
AMMN	9,000	-2.70%	45			37.40%		9,000	54%	5,850	▼	15,000	-40%
PGAS	1,520	-1.30%	7			34.51%		1,520	43%	1,060	▼	1,700	-11%
SRTG	2,120	0.95%	5			29.27%		2,120	73%	1,225	▼	2,800	-24%
UNTR	26,775	-2.19%	5			18.34%		26,775	28%	20,925	▼	28,150	-5%
INDF	7,550	-1.31%	7			17.05%		7,550	29%	5,850	▼	8,000	-6%
ICBP	11,900	0.00%	17			12.53%		11,900	24%	9,600	▼	12,875	-8%
EXCL	2,220	1.83%	18			11.00%		2,220	18%	1,885	▼	2,650	-16%
PTBA	2,700	-3.23%	6			10.66%		2,700	17%	2,300	▼	3,180	-15%
SIDO	575	-0.86%	15			9.52%		575	17%	492	▼	780	-26%
ACES	770	-0.65%	15			6.94%		770	16%	665	▼	995	-23%
BBCA	10,000	0.00%	23			6.38%		10,000	15%	8,675	▼	10,950	-9%
ITMG	26,650	-2.38%	5			3.90%		26,650	13%	23,575	▼	28,775	-7%
BBTN	1,285	-0.39%	5			2.80%		1,285	9%	1,175	▼	1,610	-20%
BMRI	6,150	-4.65%	10			1.65%		6,150	11%	5,525	▼	7,550	-19%
AMRT	2,850	-0.70%	33			-2.73%		2,850	14%	2,490	▼	3,650	-22%
MEDC	1,090	-3.11%	5			-5.63%		1,090	11%	980	▼	1,635	-33%
KLBF	1,500	0.33%	22			-6.83%		1,500	9%	1,375	▼	1,795	-16%
CPIN	4,670	-1.68%	38			-7.06%		4,670	6%	4,410	▼	5,650	-17%
BBNI	4,980	-0.90%	9			-7.35%		4,980	17%	4,260	▼	6,250	-20%
ARTO	2,640	-1.12%	342			-8.97%		2,640	39%	1,895	▼	3,860	-32%
ASII	5,100	-0.49%	6			-9.73%		5,100	19%	4,290	▼	5,825	-12%
MBMA	500	-1.96%	70			-10.71%		500	5%	476	▼	730	-32%
MAPI	1,575	5.00%	15			-12.01%		1,575	27%	1,240	▼	2,050	-23%
MTEL	620	2.48%	24			-12.06%		620	13%	550	▼	765	-19%
ADRO	2,080	-24.64%	3			-12.61%		2,080	0%	2,070	▼	4,300	-52%
INKP	7,250	-2.03%	8			-12.91%		7,250	2%	7,100	▼	10,000	-28%
PGEO	990	-1.49%	16			-15.38%		990	0%	990	▼	1,500	-34%
ANTM	1,430	0.70%	14			-16.13%		1,430	22%	1,175	▼	1,845	-22%
INCO	3,600	-0.55%	23			-16.47%		3,600	1%	3,554	▼	5,218	-31%
AKRA	1,230	0.41%	10			-16.61%		1,230	2%	1,210	▼	1,865	-34%
GOTO	71	-1.39%	#N/A			-17.44%		71	42%	50	▼	116	-39%
HRUM	1,090	-1.80%	8			-18.35%		1,090	4%	1,050	▼	1,590	-31%
BBRI	4,250	-1.85%	10			-25.76%		4,250	4%	4,090	▼	6,450	-34%
INTP	6,850	-0.72%	13			-27.13%		6,850	9%	6,275	▼	10,200	-33%
TOWR	705	0.00%	11			-28.79%		705	7%	660	▼	1,030	-32%
TLKM	2,710	-0.37%	12			-31.39%		2,710	8%	2,500	▼	4,240	-36%
MDKA	1,840	-4.66%	173			-31.85%		1,840	1%	1,830	▼	2,970	-38%
BRPT	855	-3.93%	317			-35.71%		855	9%	785	▼	1,947	-56%
GGRM	12,825	-1.16%	13			-36.90%		12,825	0%	12,825	▼	21,525	-40%
BUKA	122	-0.81%	#N/A			-43.52%		122	14%	107	▼	218	-44%
SMGR	3,500	-3.05%	20			-45.31%		3,500	3%	3,410	▼	6,650	-47%
UNVR	1,865	-1.06%	20			-47.17%		1,865	7%	1,735	▼	3,700	-50%
ISAT	2,400	1.27%	14			-74.40%		2,400	13%	2,120	▼	3,063	-22%

Sumber: Research Team Erdikha Elit Sekuritas

## KETERANGAN

**PER** : PER saat ini dibawah 10 kali

**YTD (%)** : Kinerja harga saat ini dibandingkan dengan harga saham awal tahun 45 saham yang memiliki likuiditas tinggi dan kapitalisasi pasar

**52W Low** : **Harga terendah** selama 52 Minggu terakhir

**52W High** : **Harga tertinggi** selama 52 Minggu terakhir

**LQ45** adalah Indeks yang mengukur kinerja harga dari besar serta didukung oleh fundamental perusahaan yang baik.

# MSCI PRICE PERFORMANCE



Monday, December 2, 2024

CODE	PRICE	Daily (%)	PER	PRICE	52 WEEK PRICE PERFORMANCE	YTD (%)	PRICE	%	52W Low	CURRENT POSITION	52W High	%
1 AMMN	9,000	-2.70%	45	AMMN	9,000	37.40%	AMMN	9,000	54%	5,850	15,000	-40%
2 TPIA	6,950	-0.71%	#N/A	TPIA	6,950	32.38%	TPIA	6,950	145%	2,840	11,225	-38%
3 UNTR	26,775	-2.19%	5	UNTR	26,775	18.34%	UNTR	26,775	28%	20,925	28,150	-5%
4 INDF	7,550	-1.31%	7	INDF	7,550	17.05%	INDF	7,550	29%	5,850	8,000	-6%
5 ICBP	11,900	0.00%	17	ICBP	11,900	12.53%	ICBP	11,900	24%	9,600	12,875	-8%
6 BBKA	10,000	0.00%	23	BBKA	10,000	6.38%	BBKA	10,000	15%	8,675	10,950	-9%
7 BMRI	6,150	-4.65%	10	BMRI	6,150	1.65%	BMRI	6,150	11%	5,525	7,550	-19%
8 AMRT	2,850	-0.70%	33	AMRT	2,850	-2.73%	AMRT	2,850	14%	2,490	3,650	-22%
9 KLBF	1,500	0.33%	22	KLBF	1,500	-6.83%	KLBF	1,500	9%	1,375	1,795	-16%
10 CPIN	4,670	-1.68%	38	CPIN	4,670	-7.06%	CPIN	4,670	6%	4,410	5,650	-17%
11 BBNI	4,980	-0.90%	9	BBNI	4,980	-7.35%	BBNI	4,980	17%	4,260	6,250	-20%
12 ASII	5,100	-0.49%	6	ASII	5,100	-9.73%	ASII	5,100	19%	4,290	5,825	-12%
13 ADRO	2,080	-24.64%	3	ADRO	2,080	-12.61%	ADRO	2,080	0%	2,070	4,300	-52%
14 INKP	7,250	-2.03%	8	INKP	7,250	-12.91%	INKP	7,250	2%	7,100	10,000	-28%
15 ANTM	1,430	0.70%	14	ANTM	1,430	-16.13%	ANTM	1,430	22%	1,175	1,845	-22%
16 GOTO	71	-1.39%	#N/A	GOTO	71	-17.44%	GOTO	71	42%	50	116	-39%
17 BBRI	4,250	-1.85%	10	BBRI	4,250	-25.76%	BBRI	4,250	4%	4,090	6,450	-34%
18 TLKM	2,710	-0.37%	12	TLKM	2,710	-31.39%	TLKM	2,710	8%	2,500	4,240	-36%
19 MDKA	1,840	-4.66%	173	MDKA	1,840	-31.85%	MDKA	1,840	1%	1,830	2,970	-38%
20 BRPT	855	-3.93%	317	BRPT	855	-35.71%	BRPT	855	9%	785	1,947	-56%
21 UNVR	1,865	-1.06%	20	UNVR	1,865	-47.17%	UNVR	1,865	7%	1,735	3,700	-50%

## Sector Weights for Monday, June 3, 2024

Sector N Weight%	Weight%
Financials	57.94
Materials	12.77
Consumer Staples	8.48
Communication Services	7.6
Industrials	4.59
Energy	3.85
Consumer Discretionary	3.1
Health Care	1.66

## INDONESIA

- MSCI Global Standard Indexes List  
 Additions -  
 Deletions ANTM

## Industry Group Weights for Monday, June 3, 2024

Industry Group Name	Weight%
Banks	57.94
Materials	12.77
Telecommunication Services	7.6
Food Beverage & Tobacco	4.6
Capital Goods	4.59
Energy	3.85
Consumer Discretionary Distribution & Retail	3.1
Consumer Staples Distribution & Retail	2.62
Pharmaceuticals, Biotechnology & Life Sciences	1.66
Household & Personal Products	1.26

- MSCI Small Cap Indexes List  
 Additions : ANTM, CMRY, FILM, INCO, WIKA  
 Deletions : -

## NEXT

November 2024 Index Review  
 o Announcement date: 7 November 2024  
 o Effective date: 27 November 2024

Sumber: Research Team Erdikha Elit Sekuritas

## KETERANGAN

- PER** : PER saat ini dibawah 10 kali
- YTD (%)** : Kinerja harga saat ini dibandingkan dengan harga saham awal tahun
- 52W Low** : Harga terendah selama 52 Minggu terakhir
- 52W High** : Harga tertinggi selama 52 Minggu terakhir

# IDX80 PERFORMANCE



Monday, December 2, 2024

260

CODE	PRICE	Daily (%)	PER	52 WEEK PRICE PERFORMANCE	YTD (%)	PRICE	%	52W Low	CURRENT POSITION	52W High	%
PANI	15,550	3.84%	497		217.35%	PANI	263%	4,280	▼	18,800	-17%
BRMS	414	4.55%	217		143.53%	BRMS	226%	127	▼	505	-18%
BRIS	2,900	-0.34%	20		66.67%	BRIS	80%	1,615	▼	3,350	-13%
PNLF	430	2.87%	10		62.88%	PNLF	78%	242	▼	520	-17%
ESSA	820	1.23%	15		54.72%	ESSA	67%	490	▼	1,010	-19%
JPFA	1,710	-0.29%	10		44.92%	JPFA	62%	1,055	▼	1,875	-9%
AMMN	9,000	-2.70%	45		37.40%	AMMN	54%	5,850	▼	15,000	-40%
PGAS	1,520	-1.30%	7		34.51%	PGAS	43%	1,060	▼	1,700	-11%
MAPA	1,100	6.80%	22		34.15%	MAPA	62%	680	▼	1,175	-6%
SRTG	2,120	0.95%	5		29.27%	SRTG	73%	1,225	▼	2,800	-24%
UNTR	26,775	-2.19%	5		18.34%	UNTR	28%	20,925	▼	28,150	-5%
INDF	7,550	-1.31%	7		17.05%	INDF	29%	5,850	▼	8,000	-6%
ELSA	442	-0.45%	5		13.92%	ELSA	19%	370	▼	545	-19%
NISP	1,330	-0.75%	6		12.71%	NISP	17%	1,140	▼	1,440	-8%
ICBP	11,900	0.00%	17		12.53%	ICBP	24%	9,600	▼	12,875	-8%
EXCL	2,220	1.83%	18		11.00%	EXCL	18%	1,885	▼	2,650	-16%
PTBA	2,700	-3.23%	6		10.66%	PTBA	17%	2,300	▼	3,180	-15%
ENRG	242	0.00%	5		10.00%	ENRG	52%	159	▼	310	-22%
GJTL	1,135	-1.30%	3		9.66%	GJTL	31%	865	▼	1,490	-24%
SIDO	575	-0.86%	15		9.52%	SIDO	17%	492	▼	780	-26%
MYOR	2,700	-0.74%	19		8.43%	MYOR	23%	2,200	▼	3,010	-10%
ACES	770	-0.65%	15		6.94%	ACES	16%	665	▼	995	-23%
BBCA	10,000	0.00%	23		6.38%	BBCA	15%	8,675	▼	10,950	-9%
ITMG	26,650	-2.38%	5		3.90%	ITMG	13%	23,575	▼	28,775	-7%
BNGA	1,755	-0.57%	7		3.54%	BNGA	8%	1,625	▼	2,220	-21%
BBTN	1,285	-0.39%	5		2.80%	BBTN	9%	1,175	▼	1,610	-20%
HEAL	1,525	3.04%	41		2.35%	HEAL	44%	1,060	▼	1,640	-7%
BMRI	6,150	-4.65%	10		1.65%	BMRI	11%	5,525	▼	7,550	-19%
INDY	1,405	0.72%	8		-2.09%	INDY	22%	1,155	▼	1,825	-23%
AUTO	2,310	-1.28%	5		-2.12%	AUTO	29%	1,795	▼	2,750	-16%
AMRT	2,850	-0.70%	33		-2.73%	AMRT	14%	2,490	▼	3,650	-22%
ERAA	414	-1.43%	6		-2.82%	ERAA	25%	332	▼	486	-15%
MEDC	1,090	-3.11%	5		-5.63%	MEDC	11%	980	▼	1,635	-33%
MPMX	990	-0.50%	8		-5.71%	MPMX	8%	915	▼	1,095	-10%
TBIG	1,970	0.51%	28		-5.74%	TBIG	23%	1,600	▼	2,180	-10%
KLBF	1,500	0.33%	22		-6.83%	KLBF	9%	1,375	▼	1,795	-16%
SMRA	535	-1.83%	8		-6.96%	SMRA	11%	480	▼	730	-27%
CPIN	4,670	-1.68%	38		-7.06%	CPIN	6%	4,410	▼	5,650	-17%
BBNI	4,980	-0.90%	9		-7.35%	BBNI	17%	4,260	▼	6,250	-20%
BSDE	1,000	-1.96%	7		-7.41%	BSDE	15%	870	▼	1,340	-25%
PWON	418	-1.42%	9		-7.93%	PWON	14%	366	▼	530	-21%
CTRA	1,070	-2.28%	10		-8.55%	CTRA	1%	1,055	▼	1,430	-25%
JSMR	4,450	-3.26%	8		-8.62%	JSMR	1%	4,410	▼	5,700	-22%
ASSA	720	2.13%	14		-8.86%	ASSA	18%	610	▼	1,000	-28%
PTPP	390	-0.51%	5		-8.88%	PTPP	43%	272	▼	625	-38%
ARTO	2,640	-1.12%	342		-8.97%	ARTO	39%	1,895	▼	3,860	-32%
MIKA	2,580	-3.37%	33		-9.47%	MIKA	4%	2,490	▼	3,310	-22%
ASII	5,100	-0.49%	6		-9.73%	ASII	19%	4,290	▼	5,825	-12%
ADMR	1,225	-3.16%	6		-9.93%	ADMR	0%	1,225	▼	1,600	-23%
MBMA	500	-1.96%	70		-10.71%	MBMA	5%	476	▼	730	-32%
MAPI	1,575	5.00%	15		-12.01%	MAPI	27%	1,240	▼	2,050	-23%
MTEL	620	2.48%	24		-12.06%	MTEL	13%	550	▼	765	-19%
ADRO	2,080	-24.64%	3		-12.61%	ADRO	0%	2,070	▼	4,300	-52%

52	INKP	7,250	-2.03%	8
	TKIM	6,350	-1.17%	9
54	PGEO	990	-1.49%	16
	AVIA	420	0.00%	16
51	ANTM	1,430	0.70%	14
	INCO	3,600	-0.55%	23
47	AKRA	1,230	0.41%	10
	NCKL	830	-1.78%	9
46	GOTO	71	-1.39%	#N/A
	EMTK	486	-0.82%	64
41	HRUM	1,090	-1.80%	8
	MNCN	300	-2.60%	4
15	BFIN	930	2.20%	9
	SCMA	130	0.00%	14
58	BBRI	4,250	-1.85%	10
	BMTR	197	-1.50%	6
24	INTP	6,850	-0.72%	13
	TOWR	705	0.00%	11
49	TLKM	2,710	-0.37%	12
	MDKA	1,840	-4.66%	173
52	BRPT	855	-3.93%	317
	GGRM	12,825	-1.16%	13
6	BUKA	122	-0.81%	#N/A
	SMGR	3,500	-3.05%	20
42	BTPS	910	-1.09%	8
	UNVR	1,865	-1.06%	20
33	ISAT	2,400	1.27%	14

INKP		-12.91%
TKIM		-13.01%
PGEO		-15.38%
AVIA		-16.00%
ANTM		-16.13%
INCO		-16.47%
AKRA		-16.61%
NCKL		-17.00%
GOTO		-17.44%
EMTK		-17.63%
HRUM		-18.35%
MNCN		-22.28%
BFIN		-22.82%
SCMA		-23.53%
BBRI		-25.76%
BMTR		-26.49%
INTP		-27.13%
TOWR		-28.79%
TLKM		-31.39%
MDKA		-31.85%
BRPT		-35.71%
GGRM		-36.90%
BUKA		-43.52%
SMGR		-45.31%
BTPS		-46.15%
UNVR		-47.17%
ISAT		-74.40%

INKP	7,250	2%	7,100	▼	10,000	-28%
TKIM	6,350	4%	6,125	▼	9,075	-30%
PGEO	990	0%	990	▼	1,500	-34%
AVIA	420	3%	406	▼	610	-31%
ANTM	1,430	22%	1,175	▼	1,845	-22%
INCO	3,600	1%	3,554	▼	5,218	-31%
AKRA	1,230	2%	1,210	▼	1,865	-34%
NCKL	830	9%	760	▼	1,105	-25%
GOTO	71	42%	50	▼	116	-39%
EMTK	486	39%	350	▼	670	-27%
HRUM	1,090	4%	1,050	▼	1,590	-31%
MNCN	300	6%	284	▼	422	-29%
BFIN	930	16%	800	▼	1,380	-33%
SCMA	130	11%	117	▼	170	-24%
BBRI	4,250	4%	4,090	▼	6,450	-34%
BMTR	197	1%	195	▼	282	-30%
INTP	6,850	9%	6,275	▼	10,200	-33%
TOWR	705	7%	660	▼	1,030	-32%
TLKM	2,710	8%	2,500	▼	4,240	-36%
MDKA	1,840	1%	1,830	▼	2,970	-38%
BRPT	855	9%	785	▼	1,947	-56%
GGRM	12,825	0%	12,825	▼	21,525	-40%
BUKA	122	14%	107	▼	218	-44%
SMGR	3,500	3%	3,410	▼	6,650	-47%
BTPS	910	1%	900	▼	1,775	-49%
UNVR	1,865	7%	1,735	▼	3,700	-50%
ISAT	2,400	13%	2,120	▼	3,063	-22%

Sumber: Research Team Erdikha Elit Sekuritas

## KETERANGAN

%52W Low	: % Kenaikan harga saat ini dibandingkan Harga terendah 52 Minggu terakhir
%52W High	: % Penurunan harga saat ini dibandingkan Harga tertinggi 52 Minggu terakhir
52W Low	: Harga terendah selama 52 Minggu terakhir
52W High	: Harga tertinggi selama 52 Minggu terakhir
YTD (%)	: Kinerja harga saat ini dibandingkan dengan harga saham awal tahun
PER	: PER saat ini dibawah 10 kali

80 saham yang memiliki likuiditas tinggi dan kapitalisasi pasar  
**IDX80** adalah Indeks yang mengukur kinerja harga dari  
 80 saham yang memiliki likuiditas tinggi dan kapitalisasi pasar  
 besar serta didukung oleh fundamental perusahaan yang baik.

Monday, December 2, 2024

## LQ 45 Performance

### \*Top Gainer\*

MAPI 1,575 (5%)  
MTEL 620 (2.4%)  
EXCL 2,220 (1.8%)  
ESSA 820 (1.2%)  
SRTG 2,120 (0.9%)

### \*Top Volume\*

GOTO 71 (70.1 Mn Lot)  
ADRO 2,080 (10.4 Mn Lot)  
BBRI 4,250 (4.1 Mn Lot)  
BRPT 855 (2.4 Mn Lot)  
BMRI 6,150 (1.5 Mn Lot)

### \*Top Frekuensi\*

ADRO 2,080 (90k x)  
BBRI 4,250 (72k x)  
BMRI 6,150 (29k x)  
GOTO 71 (24k x)  
BRPT 855 (18k x)

### \*Top Loser\*

ADRO 2,080 (-24.6%)  
MDKA 1,840 (-4.6%)  
BMRI 6,150 (-4.6%)  
BRPT 855 (-3.9%)  
PTBA 2,700 (-3.2%)

### \*Top Value\*

ADRO 2,080 (2227.9 IDR Bn)  
BBRI 4,250 (1761.5 IDR Bn)  
BMRI 6,150 (979.7 IDR Bn)  
BBCA 10,000 (770.5 IDR Bn)  
GOTO 71 (492.5 IDR Bn)

## All Stock Performance

### \*Top Gainer\*

DPUM 70 (34.6%)  
CITY 160 (34.4%)  
BTEK 4 (33.3%)  
FUTR 135 (31%)  
PU DP 322 (24.8%)

### \*Top Volume\*

GOTO 71 (70.1 Mn Lot)  
BUMI 147 (22.2 Mn Lot)  
ADRO 2,080 (10.4 Mn Lot)  
INPC 436 (6.1 Mn Lot)  
BRMS 414 (5.4 Mn Lot)

### \*Top Frekuensi\*

ADRO 2,080 (90k x)  
BBRI 4,250 (72k x)  
AWAN 328 (70k x)  
INPC 436 (42k x)  
PSAB 302 (34k x)

### \*Top Loser\*

VISI 236 (-24.8%)  
ADRO 2,080 (-24.6%)  
TOSK 84 (-20.7%)  
HADE 4 (-20%)  
KLAS 117 (-19.3%)

### \*Top Value\*

ADRO 2,080 (2227.9 IDR Bn)  
BBRI 4,250 (1761.5 IDR Bn)  
BMRI 6,150 (979.7 IDR Bn)  
BBCA 10,000 (770.5 IDR Bn)  
GOTO 71 (492.5 IDR Bn)

# ECONOMIC CALENDAR



Monday December 2 2024		Actual	Previous	Consensus	Forecast
8:45 AM	CN	<a href="#">Caixin Manufacturing PMI NOV</a>	50.3	50.5	50.7
11:00 AM	ID	<a href="#">Inflation Rate YoY NOV</a>	1.71%	1.50%	1.60%
9:45 PM	US	<a href="#">S&amp;P Global Manufacturing PMI Final NOV</a>	48.5	48.8	48.8
10:00 PM	US	<a href="#">ISM Manufacturing PMI NOV</a>	46.5	47.5	47.2
10:00 PM	US	<a href="#">ISM Manufacturing Employment NOV</a>	44.4		47
Tuesday December 03 2024		Actual	Previous	Consensus	Forecast
3:15 AM	US	<a href="#">Fed Waller Speech</a>			
4:30 AM	US	<a href="#">Fed Williams Speech</a>			
10:00 PM	US	<a href="#">JOLTs Job Openings OCT</a>	7.443M	7.49M	7.38M
Wednesday December 04 2024		Actual	Previous	Consensus	Forecast
4:30 AM	US	<a href="#">API Crude Oil Stock Change NOV/29</a>	-5.935M		
8:45 AM	CN	<a href="#">Caixin Services PMI NOV</a>	52	52.5	51.8
8:15 PM	US	<a href="#">ADP Employment Change NOV</a>	233K	165K	180.0K
8:45 PM	US	<a href="#">Fed Musalem Speech</a>			
9:45 PM	US	<a href="#">S&amp;P Global Composite PMI Final NOV</a>	54.1	55.3	55.3
9:45 PM	US	<a href="#">S&amp;P Global Services PMI Final NOV</a>	55	57	57
10:00 PM	US	<a href="#">ISM Services PMI NOV</a>	56	55.5	56.7
10:00 PM	US	<a href="#">Factory Orders MoM OCT</a>	-0.50%	0.40%	0.30%
10:30 PM	US	<a href="#">EIA Crude Oil Stocks Change NOV/29</a>	-1.844M		
10:30 PM	US	<a href="#">EIA Gasoline Stocks Change NOV/29</a>	3.314M		
Thursday December 05 2024		Actual	Previous	Consensus	Forecast
1:45 AM	US	<a href="#">Fed Chair Powell Speech</a>			
8:30 PM	US	<a href="#">Balance of Trade OCT</a>	-\$84.4B	-\$78.8B	-\$83B
8:30 PM	US	<a href="#">Exports OCT</a>	\$267.9B		\$265.0B
8:30 PM	US	<a href="#">Imports OCT</a>	\$352.3B		\$348.0B
8:30 PM	US	<a href="#">Initial Jobless Claims NOV/30</a>	213K	220K	214.0K
11:30 PM	US	<a href="#">Fed Barkin Speech</a>			
Friday December 6 2024		Actual	Previous	Consensus	Forecast
8:30 PM	US	<a href="#">Non Farm Payrolls NOV</a>	12K	183K	194.0K
8:30 PM	US	<a href="#">Unemployment Rate NOV</a>	4.10%	4.10%	4.10%
8:30 PM	US	<a href="#">Average Hourly Earnings MoM NOV</a>	0.40%	0.30%	0.30%
8:30 PM	US	<a href="#">Average Hourly Earnings YoY NOV</a>	4%		4%
8:30 PM	US	<a href="#">Participation Rate NOV</a>	62.60%		62.60%
9:15 PM	US	<a href="#">Fed Bowman Speech</a>			
10:00 PM	US	<a href="#">Michigan Consumer Sentiment Prel DEC</a>	71.8	72.9	72.5
10:30 PM	US	<a href="#">Fed Golsbee Speech</a>			



# CORPORATE ACTION



Monday, December 2, 2024

## PENGUMUMAN

### UNUSUAL MARKET ACTIVITY (UMA)

28 Nov UMA (SURI)  
25 Nov UMA (MANG)  
25 Nov UMA (TRON)  
22 Nov UMA (BUAH)  
22 Nov UMA (DOSS)  
22 Nov UMA (BOAT)  
22 Nov UMA (PSAB)  
22 Nov UMA (SSMS)  
21 Nov UMA (PGJO)  
21 Nov UMA (FILM)

### SUSPEND / UNSUSPEND

29 Nov **Penghentian Sementara (INPC)**  
26 Nov **Penghentian Sementara (CLAY)**  
25 Nov **Pembukaan Kembali (CLAY)**  
25 Nov **Pembukaan Kembali (GPSO)**  
25 Nov **Pembukaan Kembali (RONY)**  
22 Nov **Pembukaan Kembali (SONA)**  
22 Nov **Pembukaan Kembali (KARW)**  
22 Nov **Penghentian Sementara (CLAY)**  
22 Nov **Pembukaan Kembali (DAAZ)**  
21 Nov **Pembukaan Kembali (KLIN)**

## AKSI KORPORASI

### 25 NOVEMBER 2024!

- Waran Bonus [Maturity]: BINO-W  
- RUPS [Jam 15:00:00]: LUCY, MIKA, MEJA, MPXL

### 26 NOVEMBER 2024!

- RUPS [Jam 10:00:00]: IGAR, BSSR, SILO, SMMT

### 28 NOVEMBER 2024!

- RUPS [Jam 09:00:00]: SMLE, BNBR, ARTI

### 29 NOVEMBER 2024!

- Bonus [Distribution]: KLAS  
- RUPS [Jam 14:00:00]: MREI, AMFG, JAWA, PIPA, CFIN

\*Data pengumuman diambil terakhir pada hari :

Senin, 02 December 2024 pukul 08:13:42

# DISCLAIMER



Telp : +62 21 3983 6420  
Fax : +62 21 3983 6422  
Email:  
admin.aonline@erdikha.com  
afo.elit@erdikha.com  
Career: hrd@erdikha.com

## **SEMARANG**

JL. Sembodro No. 12A, Plomblokan  
Kec. Semarang Utara, Kota Semarang  
Jawa Tengah – 50171  
WA : +6281808054623  
Telp : +62243512068

## **JAKARTA (Head Office)**

Gedung Sucaco Lt 3  
JL. Kebon Sirih Kav. 71  
Jakarta Pusat – 10340  
Telp : +622139836420

### Disclaimer :

The information contained herein has been compiled from sources that we believe to be reliable. No warranty (express or implied) is made to the accuracy or completeness of the information. All opinions and estimates included in this report constitute our judgment as of this date, without regards to its fairness, and are subject to change without notice. This document has been prepared for general information only, without regards to the specific objectives, financial situation and needs of any particular person who may receive it. No responsibility or liability whatsoever or howsoever arising is accepted in relation to the contents hereof by any company mentioned herein, or any their respective directors, officers or employees. This document is not an offer to sell or a solicitation to buy any securities. This firms and its affiliates and their officers and employees may have a position, make markets, act as principal or engage in transaction in securities or related investments of any company mentioned herein, may perform services for or solicit business from any company mentioned herein, and may have acted upon or used any of the recommendations herein before they have been provided to you. Available only to person having professional experience in matters relating to investments.